



SCENIC°ECLIPSE

THE WORLD'S FIRST DISCOVERY YACHT™

THE KIMBERLEY

EXCLUSIVE 2021 DISCOVERY VOYAGES





Welcome to the extraordinary

As a proudly Australian-founded company we are delighted to invite you to experience the benchmark in ultra-luxury cruising – Scenic Eclipse, The World’s First Discovery Yacht™. The exclusive voyages featured in this brochure have been created especially for Australian guests to experience the endless wonders of the Kimberley region.

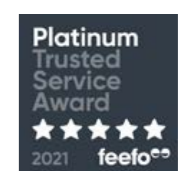
Your experience will be one where 6-star ultra-luxury meets discovery. Take time to relax in your spacious suite enjoying the finest luxury amenities and butler service, delight in a culinary journey at up to 10 world-class dining experiences and rejuvenate at the luxurious 550m² Senses Spa.

We have the top experts in their fields to safely guide and enrich your Discovery Voyage, every step of the way. Enjoy on board education sessions in the state-of-the-art theatre, guided nature walks for prime wildlife viewing and Zodiac excursions past magnificent waterfalls. The Scenic Eclipse Captain, expert Discovery, Culinary and Hotel Teams will share their passion for, and knowledge of, this magnificent region.

We look forward to welcoming you on board Scenic Eclipse.



Captain
Erwan Le Rouzic



Two Helicopters[^]

Soar above the spectacular Kimberley coastline, waterfalls and soaring red cliffs in one of our helicopters and discover the many wonders beyond the horizon.



Up to 10 Dining Experiences

A culinary journey awaits, with up to 10 dining experiences from casual to fine dining, including 24-hour in-suite dining.

GPS Dynamic Positioning System

This maintains the ships location, without dropping anchor onto sensitive seabeds.

Senses Spa

The exclusive Senses Spa boasts 550m² of pure indulgence and tranquility, featuring an extensive menu of luxury treatments*.

WHERE ULTRA-LUXURY MEETS DISCOVERY

Observation Lounge

Provides optimal viewing with Swarovski telescopes and a place to relax.

Observation Deck

Spacious Observation Terrace overlooking the front of the yacht with sweeping views.

State-of-the-Art Technology

A strengthened hull, forward bow thrusters and an electronic Azipod propulsion system enable safe navigation.

Nine Lounges & Bars

With an impressive array of indoor and outdoor spaces, for up to 228 guests, there is plenty of room to relax.

Theatre

The state-of-the-art theatre hosts lectures and education programs.

Zodiacs

Our fleet of Zodiacs will take you to the heart of the Kimberley.

Oversized Stabilisers

Custom-built stabilisers are 50% larger than other ships, providing greater stability for navigating waters and disembarking for shore excursions.

Submarine[^]

Dive below and explore the delights and mysteries of the deep on an unforgettable excursion in our submarine, Scenic Neptune.

Marina

The specially designed marina makes boarding our Zodiacs a breeze.



[^]Helicopter and submarine at additional cost, subject to regulatory approval, availability, weight restrictions, medical approval and weather and tidal conditions.
*Spa treatments at additional cost. NB: Some images are artist's impressions.

Scenic Eclipse has set the benchmark in ultra-luxury cruising, custom-designed with a wealth of world-class facilities for unrivalled exploration. As part of our commitment to ensuring the destinations we visit retain their wonder, we've invested in state-of-the-art technology and environmentally sustainable systems, to leave as small a footprint as possible.



Scenic Eclipse The World's First Discovery Yacht



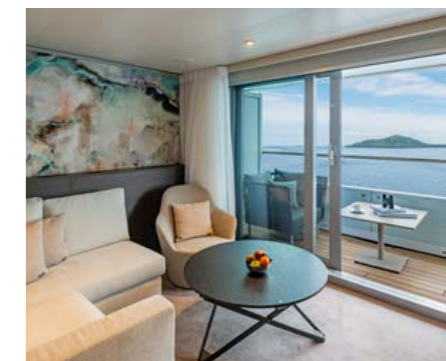
Discovery Yacht Cruising

Scenic Eclipse caters for up to 228 guests and features an impressive array of indoor and outdoor spaces for an intimate cruising experience. Enjoy up to 10 dining experiences, nine bars and lounges, the indulgent 550m² Senses Spa and a dedicated Observation Lounge and Terrace. Be inspired by lectures from our expert Discovery Team, in the state-of-the-art theatre.



World-Class Design

Scenic Eclipse is custom-designed with state-of-the-art technology and environmentally sustainable systems. This includes custom-built stabilisers, 50% larger than other ships to provide greater stability, a strengthened hull, forward bow thrusters and an electronic Azipod propulsion system, enabling safe navigation.



6-Star Ultra-Luxury

Watch the world go by from your private verandah suite in 6-star ultra-luxury. A dedicated butler service is available for every guest, along with an almost 1:1 staff-to-guest ratio. The Comfort Class 1 notation, featuring the highest sound insulation and vibration rating as per the marine class society Bureau Vista, spans throughout all public spaces and suites.



Two Helicopters[^] and a Submarine[^]

Venture beyond the horizon, with Scenic Eclipse's two state-of-the-art Airbus H130-T2 helicopters, custom-designed for optimal flightseeing. Dive below the ocean for the most luxurious experience on board Scenic Neptune, our submarine custom-built for optimal sightseeing excursions in crystal clear waters and all that lies in them.



Unrivalled Viewing

Scenic Eclipse has an abundance of space, spanning across 10 luxurious decks, from outdoor areas, to the Sun Terrace on the top deck offering sweeping views, to the spacious Observation Terrace overlooking the front of the yacht. The Senses Spa and Pool Terrace provide relaxing vantage points to spot incredible landmarks and wildlife ensuring you never miss a moment.



State-Of-The-Art Technology

Your safety is our highest priority. Scenic Eclipse's state-of-the-art-technology includes Safe Return to Port with multiple redundant operating systems. The GPS Dynamic Positioning allows us to maintain our location without dropping anchor onto sensitive seabeds. We have also installed Advance Wastewater Treatment system and highly effective engines to reduce emissions, noise and vibrations.

Our Commitment to your Health & Safety

The Scenic Health & Safety Steering Committee is working closely with Cruise Lines International Association (CLIA), local and international Government Health agencies, to ensure our protocols go above and beyond the latest regulatory requirements.

The most recent insights and world-class technologies have been implemented on board Scenic Eclipse. Amongst our extensive range of health and safety measures, Scenic Eclipse will exceed expectations with an advanced Heating, Ventilation and

Air Conditioning system (HVAC) which will provide 100% fresh air through a three-stage air purification process in all suites and public areas. We are committed to continuously updating our protocols to safeguard the health and safety of our valued guests and crew, ensuring you can travel with complete confidence.

For further information on these policies, please visit scenic.com.au/assurance-oceans

[^]Submarine and helicopter at additional cost, subject to regulatory approval, availability, weight restrictions, medical approval and weather and tidal conditions. NB: Some images are artist's impressions.



Scenic Eclipse Truly All-Inclusive Luxury

Enjoy the experience of a lifetime, as we reveal the many wonders of the Kimberley's magnificent waterways, from the elegant surrounds of your ultra-luxury Discovery Yacht, Scenic Eclipse.



When you travel on board Scenic Eclipse you can be confident that every detail is taken care of and our highly trained staff will anticipate your every need.

Each aspect of your comfort and peace of mind has been considered, including your airport transfers, all tipping and gratuities both on board and on shore, making your cruise a truly carefree experience.

Your expert Discovery Leaders, regional Discovery Specialists and local guides will ensure every port of call surprises and delights.

Truly All-Inclusive Services & Amenities

- Only up to 228 guests on board for a truly exclusive experience
- Spacious all-verandah luxury suite accommodation
- Butler service for every guest and an almost 1:1 staff-to-guest ratio
- Up to 10 dining experiences from Asian to international and fine French cuisine
- The finest selection of included premium branded beverages, with a choice of over 100 whiskeys*
- Engaging lecture and education program with on board experts
- Dedicated Observation Lounge & Terrace for optimal viewing opportunities
- On board Swarovski Telescopes and in suite binoculars so you never miss a moment
- Indulgent 550m² Senses Spa[#], gym, yoga and Pilates studio
- Scandinavian inspired outdoor vitality pools
- State-of-the-art theatre for entertainment and education program
- Complimentary Wi-Fi[^]
- Return airport transfers, all tipping on board and on shore

A Scenic Whiskey Bar
B Grand Panorama Suite

*All drinks on board are included except for a very small number of rare, fine and vintage wines, Champagnes and spirits. [^]Limited in remote regions [#]Spa treatments at an additional cost. NB: Some images are artist's impressions.





Scenic Eclipse Truly All-Inclusive Discovery

From observing ancient landscapes, to spectacular waterfalls and the unique wildlife of the Kimberley, our handcrafted experiences and expert Discovery Team will take you to the heart of your destination.



Scenic Discovery Voyages

Choose from a range of truly all-inclusive expert-led activities, guided by our specialist Discovery Team. Our fleet of Zodiacs are an integral part of these immersive Scenic Discovery experiences and shore side expedition program.

- A Scenic Eclipse Zodiac
- B King George River
- C Saltwater crocodile
- D Wandjina Indigenous rock art
- E Horizontal Falls

The advertised itineraries (Itinerary) are subject to the grant of Australian and international regulatory approvals for operations within Australian territorial waters. If final regulatory approvals are granted, Scenic Eclipse and the Itinerary will still be subject to any Federal, State or Local government restrictions based on current pandemic protocols. These may include travel restrictions, quarantine regulations and border closures. In those circumstances, we may need to cancel or alter all or part of the Itinerary, either prior to or once the voyage has begun. Alteration of the Itinerary may include (without limitation) substituting or removing ports of call and shore excursions; delaying or bringing forward the commencement of all or any part of the Itinerary; reducing or extending the duration of all or any part of the Itinerary. Our terms and conditions contain the parties' rights in the event that any of these protocols or restrictions are introduced, or regulatory approvals are not obtained.

Tourism Western Australia

Tourism Western Australia



Scenic Eclipse Beyond the horizon



Soar above by helicopter

Scenic Eclipse has two state-of-the-art Airbus H130-T2 helicopters^ on board, each custom-designed for flightseeing. Providing treasured views of Mitchell Falls, magical waterways, dramatic waterfalls and a birds eye view of the Kimberley wildlife - these spectacular memories will last a lifetime.

These helicopters are one of the quietest aircrafts in market, with Bose® noise-cancelling headsets creating a quiet ambience. Guests can soak up the awe-inspiring landscapes as they listen to the pilot's commentary.

Explore by Zodiac

Scenic Eclipse's fleet of 12 Mark IV zodiacs are the perfect tool to discover and explore deep into the shores and estuaries of the pristine and ancient land, guided by our expert Discovery Team. Sitting in your Zodiac watching Montgomery Reef surface from the Indian Ocean. In just a couple of hours around 400 square kilometres of reef will be exposed. Sir David Attenborough refers to Montgomery Reef as 'one of the greatest natural wonders of the world'. Our Zodiacs give you front row access to this and many more of the natural wonders of the Kimberley coastline.

- A Experience the Kimberley from the air
- B Prince Frederick Harbour, Hunter River
- C Scenic Eclipse Zodiac

^Helicopter at additional cost, subject to regulatory approval, availability, weight restrictions, medical approval and weather conditions.
NB: Some images are artist's impressions.





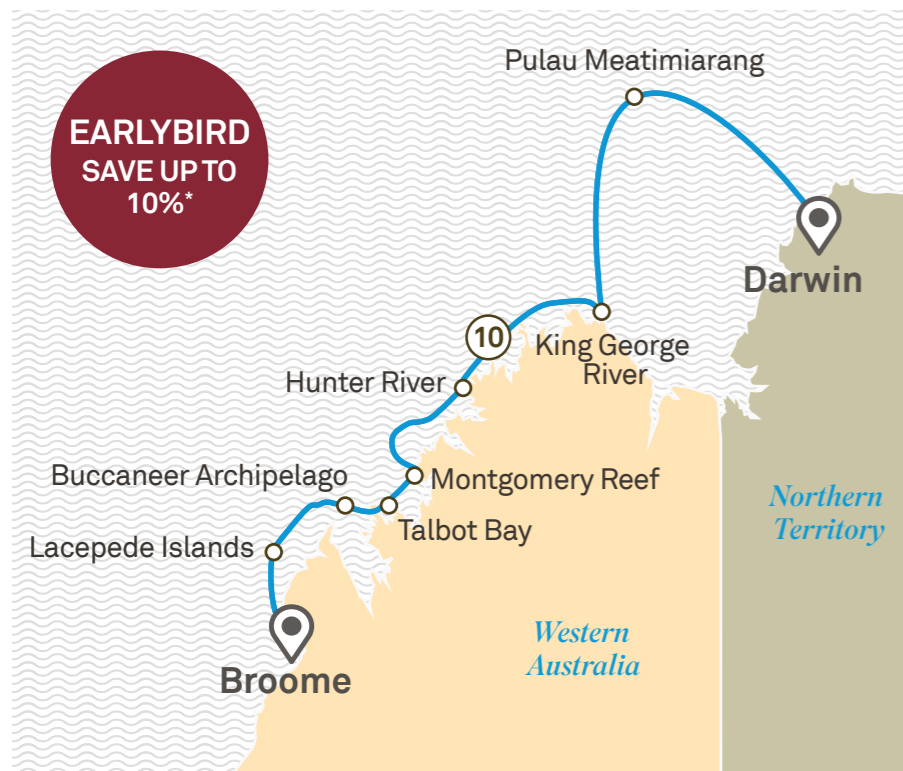
Discover the Kimberley Coastline: An Ancient Wilderness

🕒 11 Day Cruise 📍 Darwin > Broome **NEW FOR 2021**

The Wonders of the Kimberley

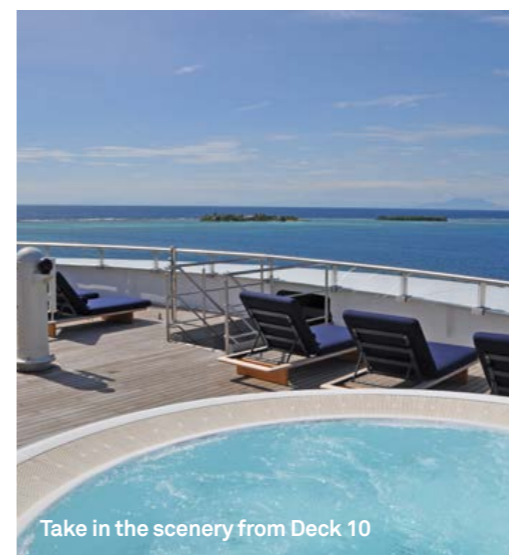
Embark on an immersive voyage to one of the most stunning and rugged parts of the globe, on board *Scenic Eclipse, The World's First Discovery Yacht™*. Our expert Discovery Team will take you on a journey into the Northern Territory's Top End and remote Kimberley region to reveal exotic natural wonders you never knew existed in your homeland.

On this unforgettable Discovery Voyage, you will marvel at an ancient landscape of vivid contrasting colours, navigate gushing waterfalls on a Zodiac, travel past sunning saltwater crocodiles, spot endangered green sea turtles, walk among an incredible variety of native flora, and get to know the traditional owners of our ancient land. After a day of discovery, unwind in the ultra-luxury on board your Discovery Yacht, and enjoy truly all-inclusive indulgence.



📍 Horizontal Falls

One of the world's greatest natural wonders, Horizontal Falls is a fascinating phenomenon to witness. Powered by massive tides deep within Talbot Bay, we navigate the narrow passage of rushing white water in Zodiacs or, when the water is calmer, we cruise between its soaring cliffs.



Highlights:

- Witness Horizontal Falls, one of the world's greatest natural wonders, and cruise through the narrow passage of rushing white water in Zodiacs.
- Visit Raft Point and see the fascinating Wandjina rock paintings that introduces the dreamtime character Namarali and tells of the great rock cod chase, as well as rich birdlife, boab trees and tremendous views to Steep Island and beyond.
- Marvel at the sheer 100-metre drop of King George Falls.
- Learn from the expert Discovery Team on board and as they take you on Zodiac excursions.

Prince Frederick Harbour

Lauren Bath

Wandjina Rock Art, Raft Point

Take in the scenery from Deck 10

Discover the Kimberley Coastline

11 Day Itinerary Darwin > Broome

Day 01 Darwin

Welcome on board ultra-luxurious Scenic Eclipse, The World's First Discovery Yacht™. Settle into your spacious suite and enjoy the first destination of this incredible journey. Darwin is the tropical capital city of the Northern Territory. It has a vast, diverse and captivating history, from its World War II survival stories, to the bombing of Darwin and Cyclone Tracy, set against the backdrop of its sparkling harbour.

Meals: D

Day 02 Day at sea - Pulau Meatimiarang (technical stop)

Enjoy a leisurely day at sea to take advantage of the luxurious on board facilities. Relax on your private terrace or verandah and enjoy personalised butler service, revitalise your mind, body and soul in the luxurious 550m² Senses Spa with a massage,

take a class at the POWER: Yoga and Pilates Studio, or learn about Australia's history, flora and fauna from your expert Discovery Team who will be sharing their unrivalled expertise through enrichment programs.

Meals: B.L.D

Day 03 At sea

Today is another day at sea. It's the perfect opportunity to catch up with new friends at one of the many bars, soak in one of the Scandinavian-inspired outdoor vitality pools, take in the view through the on board Swarovski telescopes in the Observation Lounge, and savour culinary delights with up to 10 truly all-inclusive world-class dining experiences.

Meals: B.L.D

Day 04 King George River

At 112 kilometres long, time spent at King George River and its thundering twin falls is an unforgettable experience. Make your way

along the river's tranquil waters, through towering gorges – home to Brahminy kites, egrets, and kingfishers – and marvel at the sheer 100-metre drop of King George Falls.

Discovery: If tides are favourable, a Zodiac discovery excursion of the river may be available.

Meals: B.L.D

Day 05 Hunter River & Mitchell Falls

Located in Prince Regent National Park, the Hunter River is an aqua blue highway flanked by pockets of emerald rainforests, vast swathes of mangroves and soaring red cliffs. Explore this magical waterway, which is said to have the highest proportion of saltwater crocodiles in the Kimberley.

Later you'll have the opportunity to venture further into the Kimberley outback to Mitchell Falls, a dramatic four-tiered waterfall that has been carved out over millennia. Its deep emerald pools contrast with the rugged red sandstone of the Mitchell Plateau, creating a mesmerising oasis. View the breathtaking Mitchell Falls from the air during a ride in one of our two on board helicopters^.

Meals: B.L.D

Day 06 Bigge Island & Low Rocks

Bigge Island is a haunting place of great silence where you'll gain a true sense of the antiquity of our country. Rise early this morning to see the renowned Wandjina (Kaiara or Sea Wandjina) spirit paintings whose origins remain shrouded in mystery and controversy. Time and weather permitting, you can walk to the far side of the island to view the unique Bradshaw (Gwion Gwion) paintings.

Discovery: Immerse yourself in the local culture during a traditional smoking ceremony followed by tea with local indigenous artists.

Meals: B.L.D

Day 07 Montgomery Reef & Raft Point

Magically rising out of the sea at low tide, Montgomery Reef is a transient landscape of coral reef and waterfalls rich with marine life. Green turtles often swim in the narrow corridors of coral around the edge of the reef, so keep your eyes peeled. **Discovery:** Take a Zodiac cruise with your expert Discovery Team around the waterfalls and maybe even spot manta rays, dolphins, black-tipped reef sharks or dugongs.

You will also visit Raft Point, an imposing bluff in the middle of Doubtful Bay, home to an impressive indigenous rock art gallery.

Meals: B.L.D

Day 08 Talbot Bay & Horizontal Falls

Talbot Bay's spectacular Horizontal Waterfalls is a natural wonder to add to your Australian bucket list. This phenomenon – which, incredibly, is still relatively unknown – is caused by a combination of geology and tides.

Discovery: If time and tides permit, your expert Discovery Team may be able to take you right through the fascinating falls and around the narrow waterways of Talbot Bay in the Zodiac. Later, choose to embark on a challenging 9.5 kilometre walk into the Kimberley's remote wilderness.

Meals: B.L.D

Day 09 Buccaneer Archipelago

Overnight, your Discovery Yacht will cruise across the mouth of King Sound into the famous Buccaneer Archipelago. This spectacular maze of more than 800 islands is jaw-dropping for its vivid colours: iron-rich red rock, lush green pockets of rainforest, striking turquoise ocean and pristine white beaches. Enjoy the picturesque scenery while you relax on board in ultra-luxury.

Meals: B.L.D

Day 10 Lacepede Islands Nature Reserve

The stunning coast of Lacepede Islands Nature Reserve was named by

French explorer Baudin in 1801 to commemorate his naturalist compatriot, Count Lacepede. In the past, Macassan boats used for fishing trepang (sea cucumbers) frequented these islands, but today they are an important nesting site for green turtles, and home to large colonies of lesser frigate birds and Brown Boobies.

Discovery: Your expert Discovery Team will take you on an exhilarating Zodiac discovery excursion, weather permitting.

Meals: B.L.D

Day 11 Broome

Your unforgettable Discovery Voyage comes to an end today. Bid farewell to your friendly crew and new friends.

Meals: B



Egrets, King Georges River

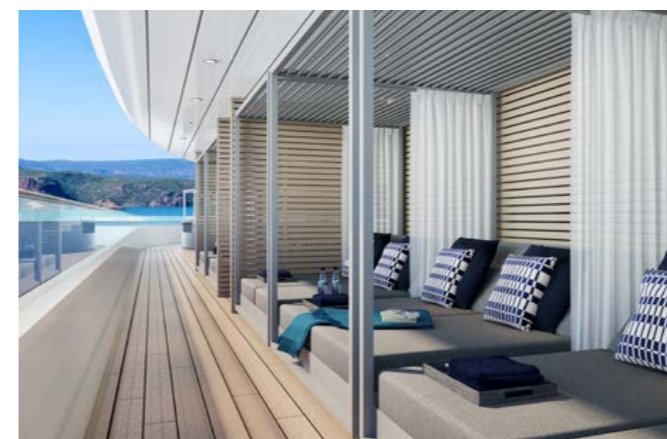
Truly all-inclusive luxury:

- Up to 228 guests on board for a truly immersive experience
- Spacious all verandah Suites
- Butler service for every guest and an almost 1:1 staff to guest ratio
- Up to ten on board dining experiences, from casual to fine dining
- Complimentary premium beverages all day, every day
- Up to 15 member Specialist Discovery Team
- Scenic Discovery excursions
- Engaging lecture and education program on board
- All tipping and gratuities

The advertised itineraries (Itinerary) are subject to the grant of Australian and international regulatory approvals for operations within Australian territorial waters. If final regulatory approvals are granted, Scenic Eclipse and the Itinerary will still be subject to any Federal, State or Local government restrictions based on current pandemic protocols. These may include travel restrictions, quarantine regulations and border closures. In those circumstances, we may need to cancel or alter all or part of the Itinerary, either prior to or once the voyage has begun. Alteration of the Itinerary may include (without limitation) substituting or removing ports of call and shore excursions; delaying or bringing forward the commencement of all or any part of the Itinerary; reducing or extending the duration of all or any part of the Itinerary. Our terms and conditions contain the parties' rights in the event that any of these protocols or restrictions are introduced, or regulatory approvals are not obtained.

Voyage Prices & Offers Voyage 1010.1

Departure Dates		Jun 19 - Jul 09, 29 2021	
Cat. Suite	Deck	Full Fare	Earlybird*
D Verandah	5	\$17,080	\$15,475
DA Deluxe Verandah	5	\$18,190	\$16,475
DB Deluxe Verandah	5	\$18,740	\$16,975
DD Grand Deluxe	5	\$19,410	\$17,575
C Verandah	6	\$19,080	\$17,275
CA Deluxe Verandah	6	\$19,690	\$17,825
CD Grand Deluxe	6	\$20,240	\$18,325
GP Grand Panorama	6	\$41,520	-
B Verandah	7	\$19,850	\$17,975
BA Deluxe Verandah	7	\$20,240	\$18,325
BD Grand Deluxe	7	\$21,520	\$19,475
A Verandah	8	\$20,410	\$18,475
AA Deluxe Verandah	8	\$21,350	\$19,325
AD Grand Deluxe	8	\$22,190	\$20,075
S Spa	8	\$25,520	\$23,075
P Panorama	8	\$38,190	-
SA Spa	9	\$25,960	\$23,475
SB Spa	9	\$26,190	\$23,675
OP Owner's Penthouse	9	\$44,850	-
OT 2-bedroom Penthouse	9	\$71,040	-



Cabanas, Deck 10, Scenic Eclipse

Deposit per person (required within 7 days of booking): 10% of cruise fare. Full payment is required 45 days prior to sailing. All prices listed are in AUD and are per person, twin share and include taxes and charges, domestic flights are not included. Single supplement prices on application. *Earlybird fares are strictly limited and subject to availability. All guests are required to bring their passport as part of the cruise documentation. It is highly recommended guests purchase domestic travel insurance. ^Helicopters and submarine at additional cost, subject to regulatory approval, availability, weight restrictions, medical approval and weather and tidal conditions. Price correct as of 26/02/2021. For full terms and conditions refer to pages 44-47.



King George Falls

Uncovering the Kimberley Coastline

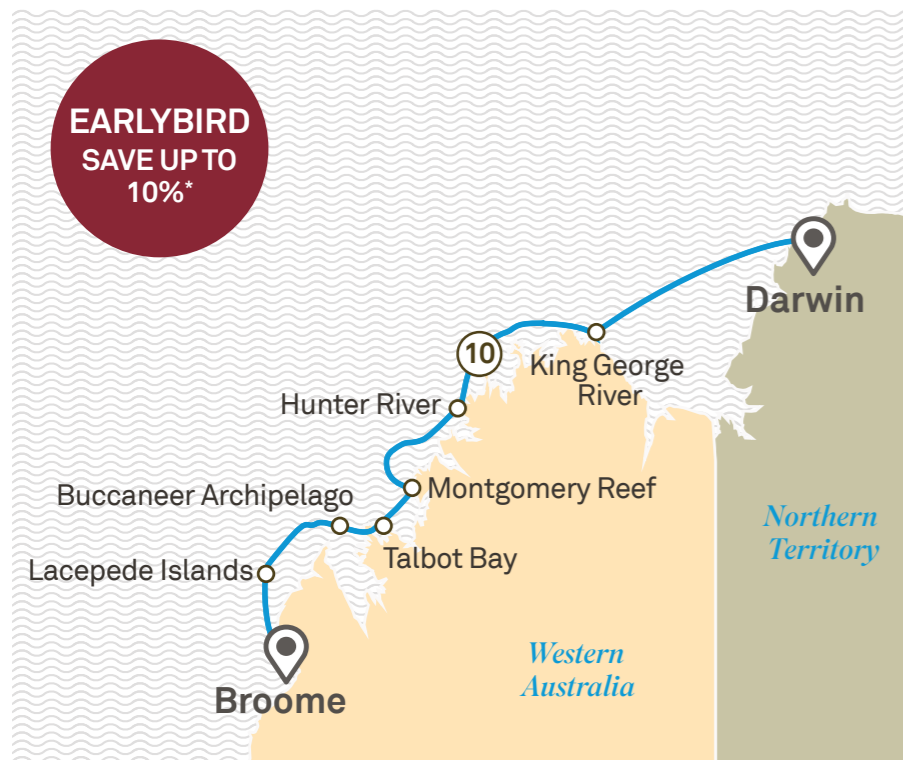
11 Day Cruise | Broome > Darwin | **NEW FOR 2021**

The treasures of Kimberley's ancient shores

More than a few thousand million years ago, the Kimberley was a unique land, detached from the rest of the Australian continent. Geological forces caused it to collide with the ancient Pilbara and Yilgarn regions, laying the foundation of the great land we call home.

The Kimberley's antiquity is visible in its unique topography, the many fossils that have been discovered here and its deep-rooted Aboriginal legacy. Your Discovery Voyage on board the 6-star ultra-luxury Scenic Eclipse, will take you deeper into this wondrous land to reveal to you its many unseen, remote gems.

Pristine islands, spectacular native birdlife, concealed reefs bursting with vibrant marine life, and the ancient spiritual heritage of the traditional landowners. The Scenic Discovery Team will introduce you to the Kimberley's unseen richness of your homeland and our indigenous experts will guide you to a deeper appreciation of this vast land. This once-in-a-lifetime experience is the ultimate combination of ultra-luxury and captivating exploration.



Lacedpede Islands

Fringed by sugar-white sand with a backdrop of sapphire sky and sea, these four islands are a haven for wildlife such as green cerulean turtles, which are considered endangered. Various bird species are also found here including lesser frigatebirds, crested terns, sandpipers, ruddy turnstones, and one of the world's largest colonies of brown boobies.



King George Falls



Saltwater Crocodiles

Tourism Western Australia



Buccaneer Archipelago

Highlights:

- o Go bird watching around Lacedpede Islands, an important breeding area for sea birds.
- o Explore Montgomery Reef, a magical, transient landscape where powerful outgoing tides expose a vast inshore reef.
- o Watch out for saltwater crocodiles while exploring the magical blue highway of the Hunter River, located in Prince Regent National Park.
- o See the renowned Wandjina (Kaiara or Sea Wandjina) spirit paintings whose origins remain shrouded in mystery and controversy, and gain a true sense of the antiquity of our country.

Uncovering the Kimberley Coastline

11 Day Itinerary Broome > Darwin

Day 01 Broome

Welcome on board Scenic Eclipse, The World's First Discovery Yacht™, where ultra-luxury meets discovery. Your Kimberley experience begins in Broome, a charming outback town where red desert collides with the turquoise Indian Ocean lapping onto pristine white sands. Founded as a pearling port in the 1880s, Broome still produces some of the finest pearls in the world today.

Meals: D

Day 02 Lacepede Islands Nature Reserve

Bird watchers will delight in today's included tour to the stunning coast of Lacepede Islands Nature Reserve, which are fringed by sugar-white sands. Named by French explorer Baudin in 1801 to commemorate his

naturalist compatriot, Count Lacepede, the islands are considered an important bird area, home to large colonies of lesser frigatebirds, brown boobies, masked boobies, roseate terns and many more. They are also an important nesting site for green turtles. **Discovery:** Your expert Discovery Team will take you on an exhilarating Zodiac excursion, weather permitting.

Meals: B.L.D

Day 03 Buccaneer Archipelago

Overnight, your Discovery Yacht will cruise across the mouth of King Sound into the famous Buccaneer Archipelago. This spectacular maze of more than 800 islands is jaw-dropping for its vivid colours: iron-rich red rock, lush green pockets of rainforest, striking

turquoise ocean and pristine white beaches. Enjoy the picturesque scenery while you relax on your suite's private verandah or learn about Australia's history, flora and fauna from your Discovery Team who will be sharing their unrivalled expertise through enrichment programs.

Meals: B.L.D

Day 04 Talbot Bay & Horizontal Falls

A Kimberley icon, Talbot Bay's spectacular Horizontal Waterfalls is a phenomenon caused by a combination of geology and tides. Don't just see it from afar.

Discovery: If time and tides permit, your expert Discovery Team may be able to take you right through the fascinating falls and around the narrow waterways of Talbot Bay by Zodiac. Later, choose to embark on a challenging 9.5 kilometre walk into the Kimberley's remote wilderness.

Meals: B.L.D

Day 05 Montgomery Reef & Raft Point

Today you will explore Montgomery Reef, an extraordinary and vast reef that rises out of the sea at low tide. Home to a startling array of corals, clams and sponges and a wealth of vibrant marine life, Montgomery Reef is part of an Aboriginal reserve.

Discovery: Take a Scenic Discovery excursion with our experts to witness the cascading waterfalls that are formed by the outgoing tide, and try to spot green turtles, manta rays, dolphins, black-tipped reef sharks and dugongs.

Meals: B.L.D

Day 06 Freshwater Cove & Kuri Bay

Adjacent to Montgomery Reef, Freshwater Cove is known for fishing and Aboriginal art which can be viewed and purchased here. We will also cruise into Kuri Bay, home to Australia's first South Sea pearl farm, now operated by renowned Paspaley pearls. The area is a haven for marine life; nearby Camden Sound Marine Reserve is a critical calving site for the largest population of humpback whales on the planet.

Meals: B.L.D

Day 07 Hunter River & Mitchell Falls

An aqua blue highway flanked by pockets of emerald rainforests, vast swathes of mangroves and soaring red cliffs, the Hunter River is said to have the highest proportion of saltwater crocodiles in the Kimberley as well as prolific birdlife.

Later you'll have the opportunity to venture further into the Kimberley outback to Mitchell Falls, a dramatic four-tiered waterfall that has been carved out over millennia. Its deep emerald pools contrast with the rugged red sandstone of the Mitchell Plateau, creating a mesmerising oasis. View the breathtaking Mitchell Falls from the air during a flight in one of our two on board helicopters^.

Meals: B.L.D

Day 08 Bigge Island & Low Rocks

Bigge Island is a haunting place of great silence where you'll gain a true sense of the antiquity of our country. Rise early this morning to see the renowned Wandjina (Kaiara or Sea Wandjina) spirit paintings whose origins remain shrouded in mystery and controversy. Time and weather permitting, you can walk to the far side of the island to view the unique Bradshaw (Gwion Gwion) paintings.

Discovery: Immerse yourself into the local culture during a traditional smoking ceremony followed by tea with the local artists.

Meals: B.L.D

Day 09 King George River

Overnight, you will have cruised northwards past Cassini Island and Cape Bougainville toward King George River. Make your way along the river's tranquil waters, through towering gorges – home to Brahminy kites, egrets, and kingfishers – and marvel at the sheer 100-metre drop of the twin King George Falls, an unforgettable sight.

Discovery: If tides are favourable, a Zodiac excursion of the river may be on offer.

Meals: B.L.D

Day 10 Darwin

Crossing the Joseph Bonaparte Gulf your Discovery Yacht is headed towards Darwin. Relax on your private verandah with a glass of fine champagne delivered by your private butler; unwind in the tranquil Senses Spa with an indulgent treatment*; head to the state-of-the-art theatre where your expert Discovery Team will be sharing their unrivalled expertise through enrichment programs; and savour culinary delights with up to 10 truly all-inclusive world-class dining experiences. Located at the 'Top End' of Australia, Northern Territory's capital city is a melting pot of more than 50 cultures and takes pride in its unique and friendly laidback lifestyle.

Tonight, you will visit the atmospheric night markets at Mindil Beach. Browse some 200 stalls touting local arts and crafts, feast on street food, and watch buskers and performers showcase their talents as the sun dips behind the ocean.

Meals: B.L.D

Day 11 Darwin

Your unforgettable Discovery Voyage comes to an end today; it is time to bid farewell to your friendly crew and new friends.

Meals: B



Horizontal Falls, Talbot Bay

Truly all-inclusive luxury:

- Up to 228 guests on board for a truly immersive experience
- Spacious all verandah Suites
- Butler service for every guest and an almost 1:1 staff to guest ratio
- Up to ten on board dining experiences, from casual to fine dining
- Complimentary premium beverages all day, every day
- Up to 15 member Specialist Discovery Team
- Scenic Discovery excursions
- Engaging lecture and education program on board
- All tipping and gratuities

The advertised itineraries (Itinerary) are subject to the grant of Australian and international regulatory approvals for operations within Australian territorial waters. If final regulatory approvals are granted, Scenic Eclipse and the Itinerary will still be subject to any Federal, State or Local government restrictions based on current pandemic protocols. These may include travel restrictions, quarantine regulations and border closures. In those circumstances, we may need to cancel or alter all or part of the Itinerary, either prior to or once the voyage has begun. Alteration of the Itinerary may include (without limitation) substituting or removing ports of call and shore excursions; delaying or bringing forward the commencement of all or any part of the Itinerary; reducing or extending the duration of all or any part of the Itinerary. Our terms and conditions contain the parties' rights in the event that any of these protocols or restrictions are introduced, or regulatory approvals are not obtained.

Voyage Prices & Offers Voyage 1010.2

Departure Dates		Jun 29 • Jul 19 • Aug 08 2021	
Cat. Suite	Deck	Full Fare	Earlybird*
D Verandah	5	\$17,080	\$15,475
DA Deluxe Verandah	5	\$18,190	\$16,475
DB Deluxe Verandah	5	\$18,740	\$16,975
DD Grand Deluxe	5	\$19,410	\$17,575
C Verandah	6	\$19,080	\$17,275
CA Deluxe Verandah	6	\$19,690	\$17,825
CD Grand Deluxe	6	\$20,240	\$18,325
GP Grand Panorama	6	\$41,520	-
B Verandah	7	\$19,850	\$17,975
BA Deluxe Verandah	7	\$20,240	\$18,325
BD Grand Deluxe	7	\$21,520	\$19,475
A Verandah	8	\$20,410	\$18,475
AA Deluxe Verandah	8	\$21,350	\$19,325
AD Grand Deluxe	8	\$22,190	\$20,075
S Spa	8	\$25,520	\$23,075
P Panorama	8	\$38,190	-
SA Spa	9	\$25,960	\$23,475
SB Spa	9	\$26,190	\$23,675
OP Owner's Penthouse	9	\$44,850	-
OT 2-bedroom Penthouse	9	\$71,040	-

Deposit per person (required within 7 days of booking): 10% of cruise fare. Full payment is required 45 days prior to sailing. All prices listed are in AUD and are per person, twin share and include taxes and charges, domestic flights are not included. Single supplement prices on application. *Earlybird fares are strictly limited and subject to availability. All guests are required to bring their passport as part of the cruise documentation. It is highly recommended guests purchase Domestic travel insurance. ^Helicopters and submarine at additional cost, subject to regulatory approval, availability, weight restrictions, medical approval and weather and tidal conditions. Price correct as of 26/02/2021. For full terms and conditions refer to pages 44-47.



Brown Boobies, Lacepede Islands Nature Reserve



Scenic Eclipse Discovery Yachts Truly All-Inclusive Dining

Dining on board Scenic Eclipse promises to be a sensory delight. With an unrivalled range of up to 10 dining experiences, from casual to fine dining inspired by all four corners of the globe, a multicultural culinary adventure awaits.

There is something to tempt, delight and savour each guests tastes. From contemporary French fine dining at Lumière to your favourite fillet of steak cooked to perfection in our elegant Elements main restaurant, or a casual meal in the Azure Bar & Café.



Up to 10 Dining Experiences*

- Elements**
The main restaurant featuring Italian, steak and seafood
- Chef's Table @ Elements**
An exclusive invitation to private dégustation dining
- Koko's**
Asian fusion restaurant and saké bar
- Sushi @ Koko's**
A wonderfully authentic Japanese experience
- Night Market @ Koko's**
Private dining with an authentic Teppanyaki grill
- Lumière**
Contemporary French fine dining and Champagne bar
- Azure Bar & Café**
Relaxed all-day grazing
- Yacht Club**
Yacht Club grill restaurant and bar, serving breakfast and lunch
- In-Suite Dining**
A comprehensive 24-hour menu
- Scenic Épicure**
Culinary masterclasses



Culinary Expertise

Tom Götter, our Corporate Chef, oversees the menu development across all on board dining experiences and manages the Culinary Team which represent 14 nations in the kitchen. Tom has an impressive career in ocean cruising and is excited to share his passion for food and cuisine with you.

A Yacht Club C Corporate Chef, Tom Götter
B Koko's D Sushi@Koko's



*Not all dining venues operate in all locations.
NB: Some images are artist's impressions.



Scenic Eclipse Discovery Yachts
A Feast for your Senses



Truly All-Inclusive Beverages

- o Unlimited complimentary premium beverages*
- o Full in-suite mini-bar re-stocked daily
- o Still and sparkling water in-suite
- o Refillable water bottle for all onshore excursions
- o An extensive range of specialty teas and illy coffees

Specialty Dining

With up to 10 dining experiences, you can confidently select your preference to dine when and where the mood strikes. Dine together in the restaurant of your choice or in-suite, after a day of activities, it's up to you.

Small and intimate dining venues on Scenic Eclipse, enable you the option of privacy and space at no additional cost. Our private dining experiences include the Night Market @ Koko's with an authentic Teppanyaki grill (by reservation) and Chef's Table dégustation dining by invitation, with each experience limited to just eight and ten guests, respectively.

A Lumière B Scenic Whiskey Bar

An Unrivalled Selection

Featuring nine spacious bars and lounges, relaxation awaits. Sip a glass of France's finest at Lumière's intimate Champagne bar, indulge in an aged single malt at the elegant Scenic Lounge Bar, enjoy a cocktail at the Panorama Bar as you take in the spectacular surrounds or unwind in the Observation Lounge with a specialty tea or coffee.

Fancy a gin and tonic as you marvel at majestic landscapes from your private verandah, or a rich cabernet sauvignon with dinner? Complimentary beverages*, including your mini-bar, are part of our signature truly all-inclusive promise. This impressive selection of top-shelf spirits, from your favourite gin, saké or over more than 100 whiskeys - it's all included all day, every day.

Not all venues operate in all locations. *All drinks on board are included except for a very small number of rare, fine and vintage wines, Champagnes and spirits.



*Owner's Penthouse Suite,
Scenic Eclipse*



Scenic Eclipse Discovery Yachts Luxury Suites

Scenic Eclipse has set the standard in ultra-luxury cruising with 114 luxurious suites across five decks. Designed as your own indulgent haven, each suite is very spacious and filled with natural light, with floor-to-ceiling sliding doors opening onto your private verandah or terrace.

From the generous 32m² Verandah Suites to the 245m² Two-bedroom Penthouse Suite, the beautiful accommodation features butler service, elegant furnishings, state-of-the-art amenities, separate sleep zone and lounge area, and more to enhance your experience. It's your ultimate retreat after a day of discovery.



Owner's Penthouse Suites Luxurious suite and terrace 195m²

Redefining luxury, your private retreat features a separate lounge and dining area, a super-sized bathroom and private jacuzzi on the spacious terrace. Extraordinary in every regard, staying in one of only two of these suites is the ultimate indulgence.

Panorama Suites Ranging in size from 105-110m²

Grandeur and style are taken to a whole new level in our Panorama and Grand Panorama Suites. Overlooking the bow of the yacht and with spacious curved terraces, a separate lounge and dining area and reading alcove, these suites will surpass your expectations.

Spa Suites Ranging in size from 46-50m²

With a premier location on the ship, the opulence of our spacious Spa Suites includes a four-poster king-size Scenic Slumber Bed, separate living room and lounge, a private verandah and a signature double-size Philippe Starck-designed spa bath. They're the perfect hideaway.

Verandah Suites Ranging in size from 32-40m²

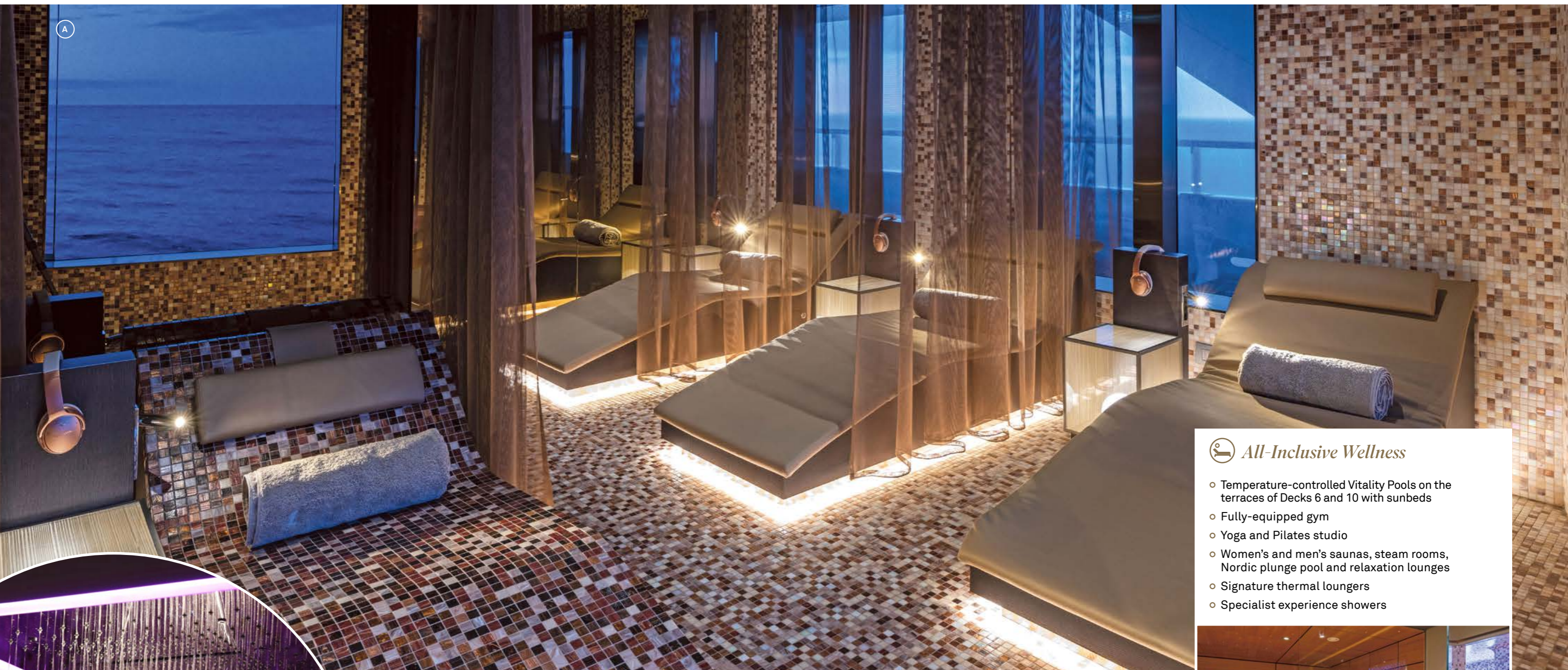
All three Verandah Suite categories offer a private retreat where you will be ensconced in all-inclusive luxury. Each suite includes a private verandah, luxury king-size Scenic Slumber Bed, separate lounge area and butler service.



Scenic Eclipse Discovery Yachts Indulgent Spaces

Scenic Eclipse features an abundance of indulgent spaces, for your relaxation and wellbeing. The exclusive Senses Spa is a vast 550m² of pure tranquillity, offering an extensive range of Scandinavian-inspired

indoor and outdoor spa facilities. The Cabanas on Deck 10 are the perfect spot to relax, while taking in the magnificent views with a Champagne or cocktail from the Panorama Bar. All complimentary for you to use.



A



B

All-Inclusive Wellness

- o Temperature-controlled Vitality Pools on the terraces of Decks 6 and 10 with sunbeds
- o Fully-equipped gym
- o Yoga and Pilates studio
- o Women's and men's saunas, steam rooms, Nordic plunge pool and relaxation lounges
- o Signature thermal loungers
- o Specialist experience showers

A Sanctuary of Serenity

An overwhelming sense of tranquillity is felt the moment you arrive, at the stunning gold leaf reception of the Senses Spa. A feeling of ultimate relaxation that continues throughout the stunning spaces that make up this on board sanctuary. The symbol of our Senses Spa is the Ginkgo leaf, reflecting the beauty, strength and vitality of the Ginkgo tree that is revered throughout Eastern cultures.

A Relaxation Room B Refreshing showers C Infrared sauna and steam room

[^]At additional cost.

Mind, Body & Soul

At Senses Spa you can boost your energy in the vitality lounge, or relax in our tranquil spaces to revitalise after your day of Discovery. The unique thermal loungers will soothe your mind while your body is gently heated and purified. Enjoy the separate POWER: Gym and PURE: Yoga and Pilates Studio on Deck 7, complimentary for you to use to help maintain your fitness and wellness, your way, throughout your voyage. Personal, one-to-one Pilates, yoga, meditation and fitness sessions[^] are also available with our instructors for expert coaching in health and wellbeing.



C



Scenic Eclipse Suite Layouts



Verandah Suite & Deluxe Verandah Suite

Suite sizes: 32-34m² (344-366 sqft)

Our Verandah and Deluxe Verandah Suites provide a spacious and comfortable introduction to ocean cruising with the finest appointments and amenities.

Suite features & services:

- Private Verandah
- Luxury king size Scenic Slumber Bed
- Separate sleep zone
- Separate lounge area
- En-suite bathroom with shower and vanity
- Luxury bathroom amenities
- Hypoallergenic air purification system
- Butler service
- Shoeshine service
- Early morning tea/coffee service
- In-suite beverage service
- In-suite dining service
- Personalised full mini-bar featuring premium beverages, Illy coffee and specialty teas (re-stocked daily)
- HDTV and Bose® sound system



Grand Deluxe Verandah Suite

Suite size: 38-40m² (409-430sqft)

Choose from the larger Grand Deluxe Verandah Suites, which provide even more room to relax.

Suite features & services:

- Private Verandah
- Luxury king size Scenic Slumber Bed
- Separate sleep zone
- Separate lounge area
- Walk-in robe
- En-suite bathroom with shower and vanity
- Luxury bathroom amenities
- Hypoallergenic air purification system
- Butler service
- Early morning tea/coffee service
- In-suite beverage service
- In-suite dining service
- Personalised full mini-bar featuring premium beverages, Illy coffee and specialty teas (re-stocked daily)
- HDTV and Bose® sound system



Spa Suite

Suite size: 46-50m² (495-538sqft)

Located on the higher decks, our luxurious Spa Suites include additional features and services that will enhance the luxury of your time on board.

Suite features & services:

- Private Verandah
- Luxury king size four poster Scenic Slumber Bed
- Separate sleep zone
- Separate lounge area including reading chair
- Walk-in robe
- Double size Philippe Starck-designed jacuzzi
- Steam shower with oversized head and light therapy
- Dual vanity basins
- Separate toilet
- Luxury bathroom amenities
- Hypoallergenic air purification system
- Butler service
- Early morning tea/coffee service
- In-suite beverage service
- In-suite dining service
- Personalised full mini-bar featuring premium beverages, Illy coffee and specialty teas (re-stocked daily)
- HDTV and Bose® sound system
- One-hour complimentary spa treatment per suite
- Complimentary laundry service (limited per day)^

Panorama Suite

Suite size: 110m² (1,184sqft)

Located at the front of the yacht on Deck 8, these opulent suites feature spacious curved terraces, additional features, services, and much more.

Suite features:

- Spacious outdoor terrace with sun loungers
- Bedroom suite with reading alcove, desk and a HDTV
- Luxury king size Scenic Slumber Bed
- Walk-in-robe
- Steam shower with light therapy
- Full size bath and spacious dual vanity
- VIP bathroom amenities
- Spacious lounge and dining area with cinema surround and a HDTV
- Dining table with seating for up to four guests
- Library including Kindle e-books
- Hypoallergenic air purification system
- Butler service
- Early morning tea/coffee service
- Canapés and petite fours delivered to your suite
- In-suite beverage service
- In-suite dining service
- Personalised full mini-bar featuring premium beverages, Illy coffee and specialty teas (re-stocked daily)
- Bose® sound system
- One-hour complimentary spa treatment per suite
- Complimentary laundry service (limited per day)^
- Priority dining in specialty restaurants
- Priority choice of shore excursions
- Priority choice of Scenic Discovery excursions – Zodiacs, kayaks, e-bikes and more
- Priority booking for spa treatments, helicopter and submarine experiences – additional charges apply
- VIP embarkation and disembarkation



Grand Panorama Suite

Suite size: 105m² (1,130sqft)

Located at the front of the yacht on Deck 6, these opulent suites feature curved terraces and spacious interiors with additional services and more.

Suite features & services:

- Curved outdoor terrace with sun lounges
- Bedroom suite with reading alcove, desk and a HDTV
- Luxury king size Scenic Slumber Bed
- Walk-in-robe
- Steam shower with light therapy
- Full size bath and spacious dual vanity
- VIP bathroom amenities
- Spacious lounge and dining area with cinema surround and a HDTV
- Dining table with seating for up to four guests
- Library including Kindle e-books
- Hypoallergenic air purification system
- Butler service
- Early morning tea/coffee service
- Canapés and petite fours delivered to your suite
- In-suite beverage service
- In-suite dining service
- Personalised full mini-bar featuring premium beverages, Illy coffee and specialty teas (re-stocked daily)
- Bose® sound system
- One-hour complimentary spa treatment per suite
- Complimentary laundry service (limited per day)^
- Priority dining in specialty restaurants
- Priority choice of shore excursions
- Priority choice of Scenic Discovery excursions – Zodiacs, kayaks, e-bikes and more
- Priority booking for spa treatments, helicopter and submarine experiences – additional charges apply
- VIP embarkation and disembarkation





Owner's Penthouse Suite

Suite size: 195m² (2,099sqft)

Our oversized Owner's Penthouse Suites are the ultimate indulgence. Located on Deck 9 and elegantly appointed with spacious curved terraces featuring a private jacuzzi and the best views on board, you will never want to leave.



Suite features & services:

- Spacious outdoor terrace with lounge area, sun loungers and private jacuzzi
- Bedroom suite with reading alcove, desk and 60" HDTV
- Luxury king size Scenic Slumber Bed
- His and hers walk-in-robe
- Dual Steam shower with light therapy
- Therapeutic spa bath
- Spa Day Bed – transforming for in-suite private spa experience
- Spacious dual his and hers vanity
- VIP bathroom amenities
- Spacious lounge and dining area with cinema surround and 70" HDTV
- Dining table with seating for up to eight guests
- Library including Kindle e-books
- Hypoallergenic air purification system
- Butler service
- Packing and unpacking of luggage
- Canapés and petite fours delivered to your suite
- In-suite beverage service
- In-suite dining service
- Personalised wine bar and mini-bar re-stocked daily with your preferences
- Personalised butler bar featuring Illy coffee and specialty teas (replenished daily)
- Guest powder room
- Bose® sound system
- One-hour complimentary in-suite spa treatment per guest
- Unlimited complimentary laundry service[^]
- Guaranteed dining in specialty restaurants
- Guaranteed preferred choice of shore excursions
- Guaranteed preferred choice of Scenic Discovery excursions – Zodiacs, kayaks, e-bikes and much more
- VIP booking for spa treatments, helicopter and submarine experiences – additional charges apply
- VIP embarkation and disembarkation

Two-bedroom Penthouse Suite

Suite size: 245m² (2,637sqft)

Combine our Owner's Penthouse Suite with a Spa Suite to create a magnificent Two-bedroom Penthouse Suite.

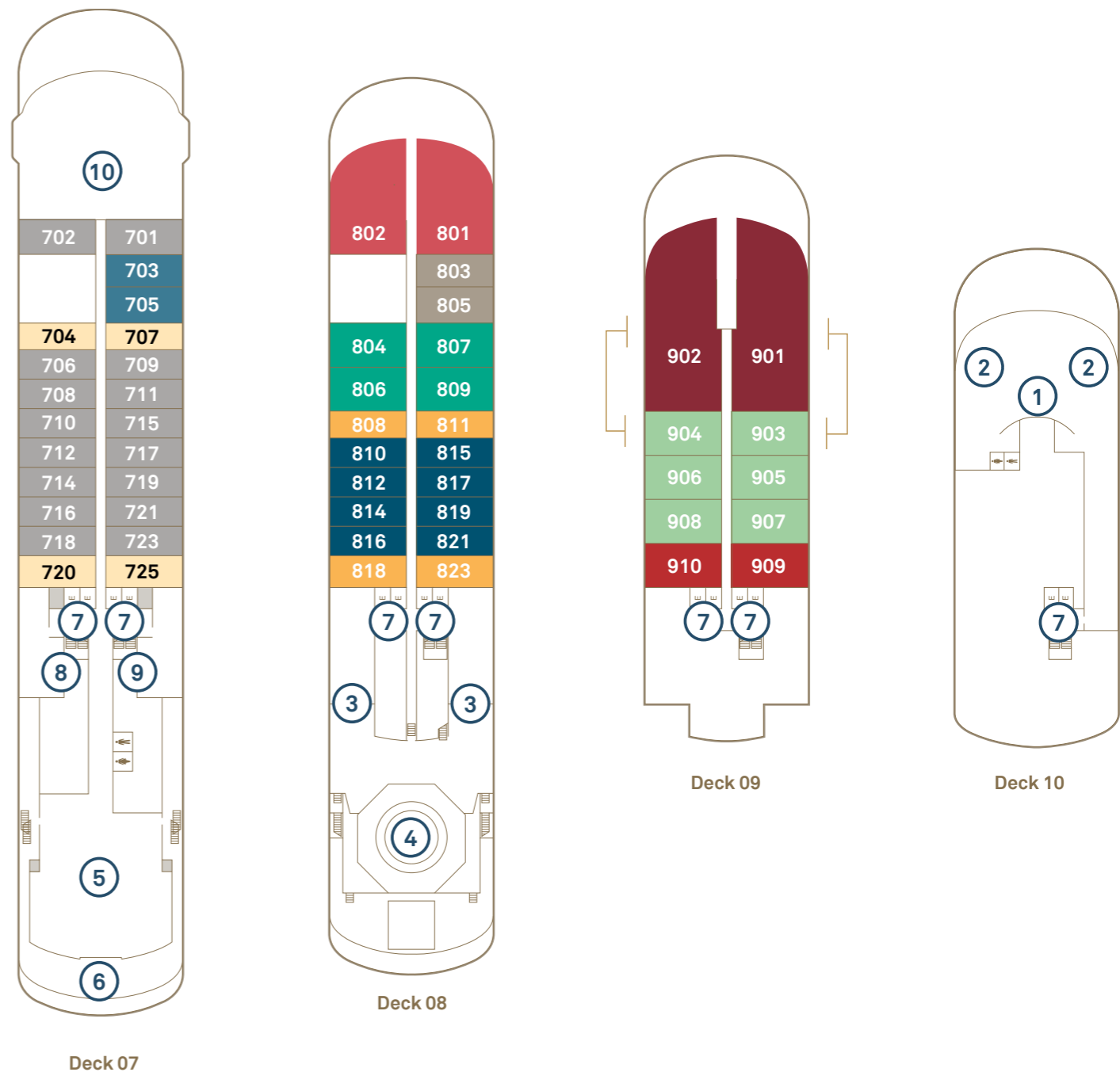
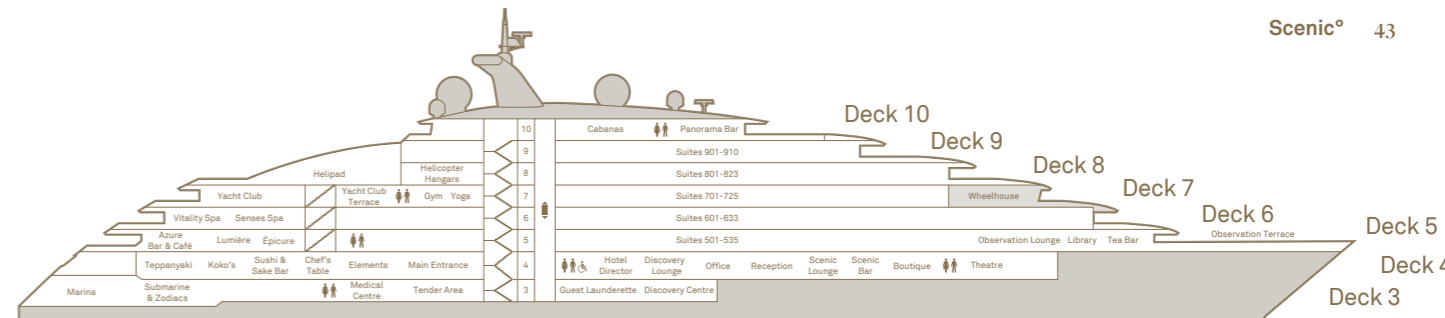
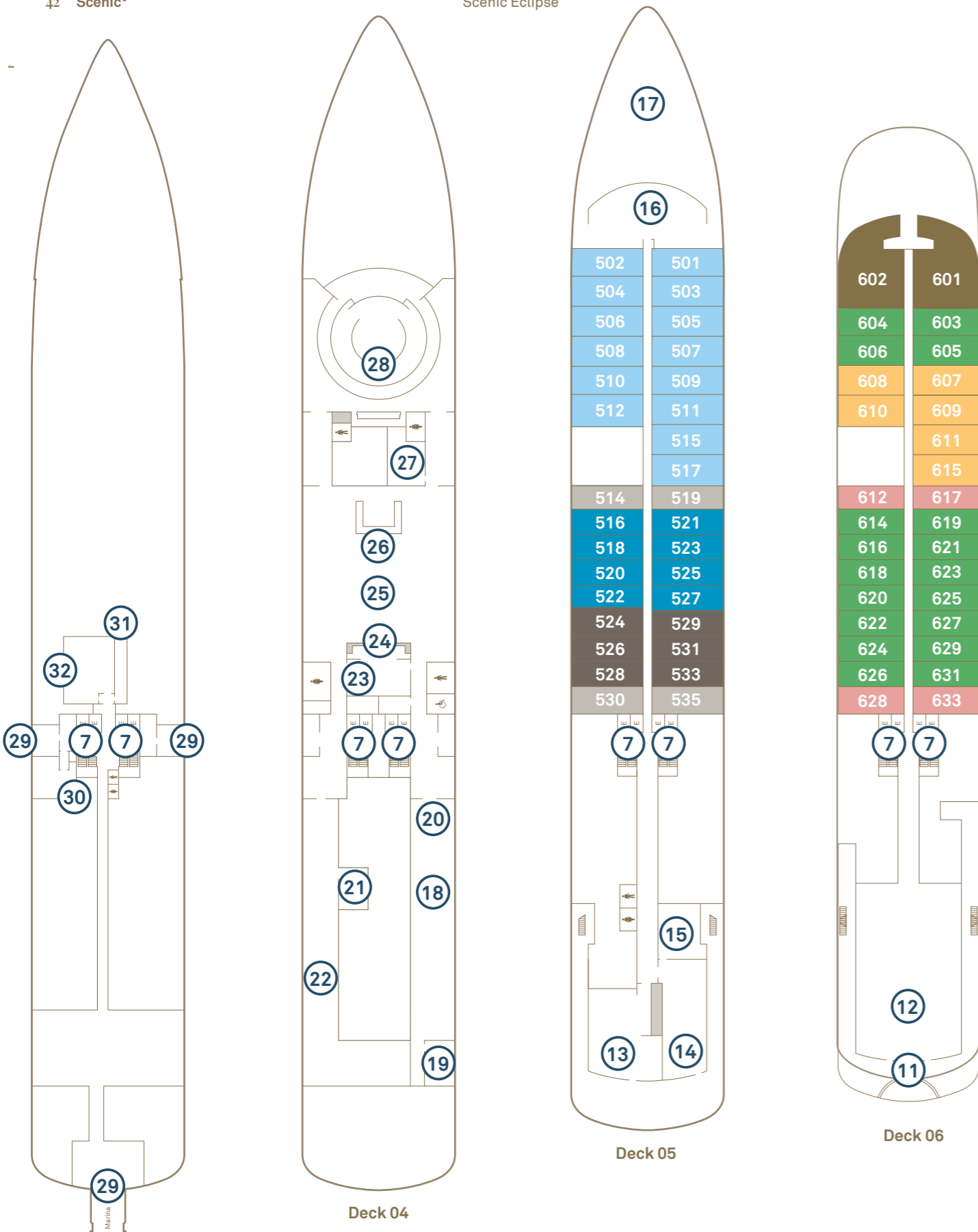
Penthouse features & services:

- Spacious outdoor terrace with lounge area, sun loungers and private jacuzzi
- Bedroom suite with reading alcove, desk and 60" HDTV
- Luxury king size Scenic Slumber Bed
- His and hers walk-in-robe
- Dual Steam shower with light therapy
- Therapeutic spa bath
- Spa Day Bed – transforming for in-suite private spa experience
- Spacious dual vanity
- VIP bathroom amenities
- Spacious lounge and dining area with cinema surround and 70" HDTV
- Dining table with seating up to eight guests
- Library including Kindle e-books
- Hypoallergenic air purification system
- Butler service
- Packing and unpacking of luggage
- Canapés and petite fours delivered to your suite
- In-suite beverage service
- In-suite dining service
- Personalised wine bar and mini-bar re-stocked daily with your preferences
- Personalised butler bar featuring Illy coffee and specialty teas (replenished daily)
- Guest powder room
- Bose® sound system
- One-hour complimentary in-suite spa treatment per guest
- Unlimited complimentary laundry service[^]
- Guaranteed dining in specialty restaurants
- Guaranteed preferred choice of shore excursions
- Guaranteed preferred choice of Scenic Discovery excursions – Zodiacs, kayaks, e-bikes and much more
- VIP booking for spa treatments, helicopter and submarine experiences – additional charges apply
- VIP embarkation and disembarkation

Spa Suite features & services:

- Private Verandah
- Luxury king size four poster Scenic Slumber Bed
- Separate sleep zone with ottoman
- Walk-in robe
- Double size Philippe Starck-designed jacuzzi
- Steam shower with oversized head and light therapy
- Dual vanity basins
- Separate toilet
- Luxury bathroom amenities
- Separate lounge area including reading chair
- Hypoallergenic air purification system
- Butler service
- Early morning tea/coffee service
- In-suite beverage service
- In-suite dining service
- Personalised full mini-bar featuring premium beverages, Illy coffee and specialty teas (re-stocked daily)
- HDTV and Bose sound system
- One-hour complimentary spa treatment per suite
- Complimentary laundry service (limited per day)[^]





Deck 03

Deck 04

Deck 05

Deck 06

Deck 07

Deck 08

Deck 09

Deck 10

Deck Plan

- 1 Panorama Bar
- 2 Vitality Pools
- 3 Helicopter hangars
- 4 Helipad
- 5 Yacht Club
- 6 Yacht Club outdoor dining
- 7 Elevator
- 8 Yoga & Pilates room
- 9 Gym & fitness area
- 10 Wheelhouse
- 11 Spa Vitality Pool
- 12 Senses Spa
- 13 Lumière
- 14 Azure Bar & Café
- 15 Scenic Épicure
- 16 Observation Lounge & Library
- 17 Observation Terrace
- 18 Koko's
- 19 Night Market @ Koko's
- 20 Sushi @ Koko's
- 21 Chef's Table@ Elements
- 22 Elements
- 23 Discovery Lounge
- 24 Reception
- 25 Scenic Lounge
- 26 Scenic Bar
- 27 Boutique
- 28 Theatre
- 29 Marina entrances
- 30 Medical centre
- 31 Self-service guest laundry
- 32 Discovery Centre

Scenic Eclipse

Built 2018 | Passengers 228 | Suites 114 | Crew 192/176 | Length 168 metres | Gross Tonnage 17,085 | Speed 17 knots

Suite Categories

Deck 5	Deck 6	Deck 7	Deck 8	Deck 9
DD Grand Deluxe Verandah 38-40m ²	GP Grand Panorama 105m ²	BD Grand Deluxe Verandah 38-40m ²	P Panorama 110m ²	OT Two-bedroom Penthouse 245m ²
DB Deluxe Verandah 32-34m ²	CD Grand Deluxe Verandah 38-40m ²	BA Deluxe Verandah 32-34m ²	S Spa Suite 46-50m ²	OP Owner's Penthouse 195m ²
DA Deluxe Verandah 32-34m ²	CA Deluxe Verandah 32-34m ²	B Verandah 32m ²	AD Grand Deluxe Verandah 38-40m ²	SB Spa Suite 46-50m ²
D Verandah 32m ²	C Verandah 32m ²		AA Deluxe Verandah 32-34m ²	SA Spa Suite 46-50m ²
			A Verandah 32m ²	

*Suites 901 & 903 and 902 & 904 connect as Two bedroom Penthouse Suite. The deck plan and suite layout images are an indication only and may vary. Suite measurements are approximate, and those in same category may vary in size.



SCENIC° ECLIPSE

THE WORLD'S FIRST DISCOVERY YACHT™

More Scenic Eclipse Destination Brochures

Antarctica & South America Voyages & Land Journeys

The Arctic, the Fjords, Japan & Russia Far East & Land Journeys

Europe & The Mediterranean Voyages & Land Journeys

North & Central America & Land Journeys



Scenic Tours Pty Ltd trading as Scenic. ABN 85 002 715 602



For more information contact
your professional travel agent

